

2010

# Drilldown on Laid-Off Workers in Milwaukee County Receiving Unemployment Insurance

John Pawasarat

*University of Wisconsin - Milwaukee*, pawasara@uwm.edu

Follow this and additional works at: [http://dc.uwm.edu/eti\\_pubs](http://dc.uwm.edu/eti_pubs)

 Part of the [Public Policy Commons](#), and the [Work, Economy and Organizations Commons](#)

---

## Recommended Citation

Pawasarat, John, "Drilldown on Laid-Off Workers in Milwaukee County Receiving Unemployment Insurance" (2010). *ETI Publications*. Paper 31.

[http://dc.uwm.edu/eti\\_pubs/31](http://dc.uwm.edu/eti_pubs/31)

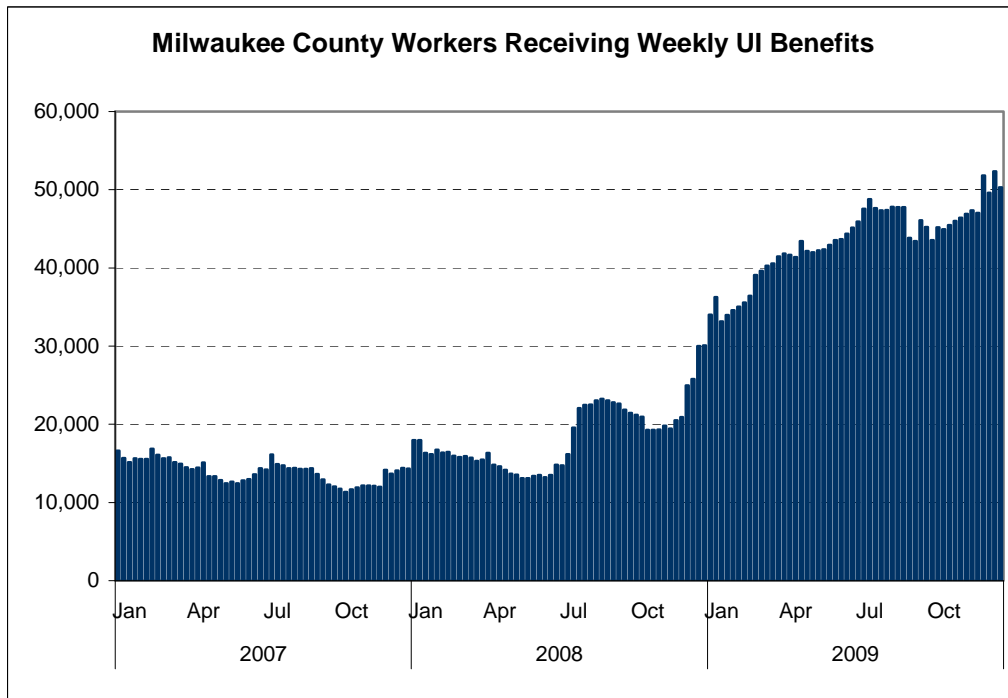
This Technical Paper is brought to you for free and open access by UWM Digital Commons. It has been accepted for inclusion in ETI Publications by an authorized administrator of UWM Digital Commons. For more information, please contact [kristinw@uwm.edu](mailto:kristinw@uwm.edu).



# Drilldown on Laid-Off Workers in Milwaukee County Receiving Unemployment Insurance

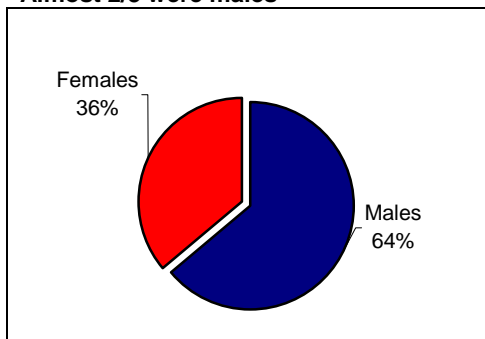
As of January 2010, over 57,000 laid-off workers in Milwaukee County were receiving weekly unemployment insurance (UI) payments rather than paychecks -- three times the number receiving UI payments in January 2007.

To assist the Milwaukee Area Workforce Investment Board, the University of Wisconsin-Milwaukee Employment and Training Institute examined the demographics and employment history of 48,131 workers in Milwaukee County receiving UI in 2<sup>nd</sup> Quarter of 2009. Five quarters of wages (4<sup>th</sup> Qtr 2007 – 4<sup>th</sup> Qtr 2008) were examined for these workers.

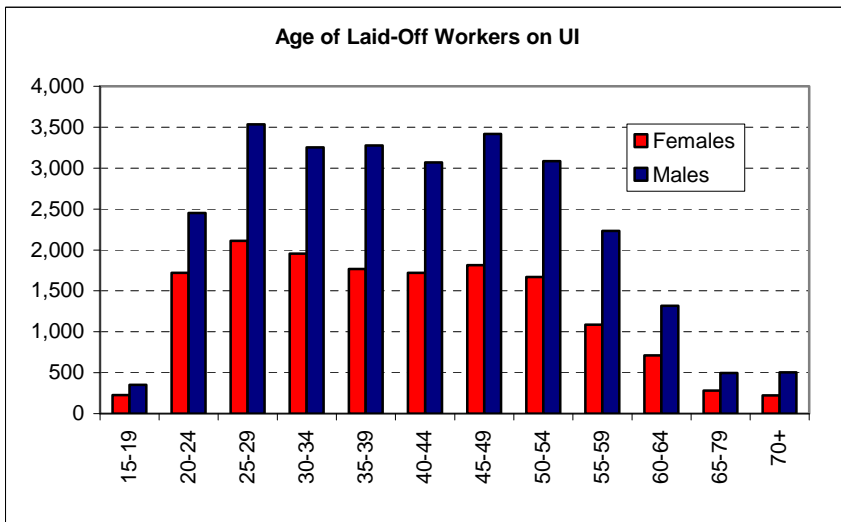


## Who received weekly unemployment insurance benefits (2<sup>nd</sup> Qtr 2009)

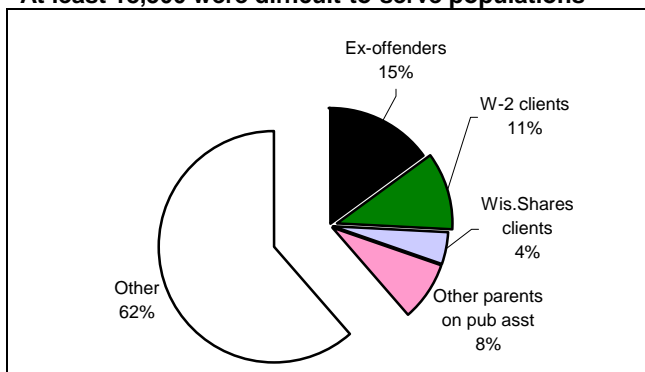
Almost 2/3 were males



Most laid-off workers are of prime working age. Only 8% are aged 60 and above



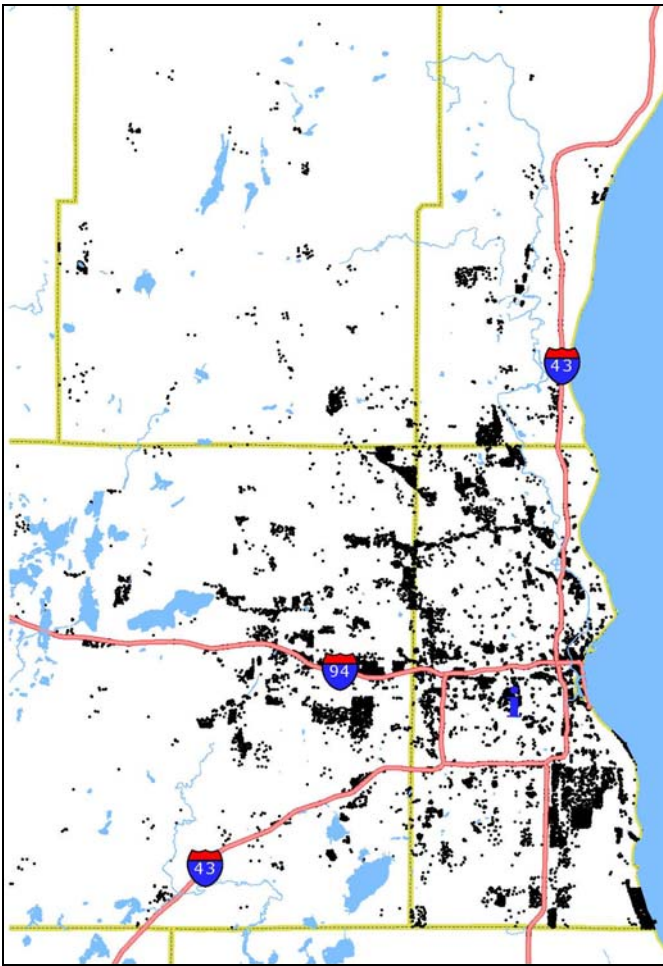
At least 18,500 were difficult-to-serve populations



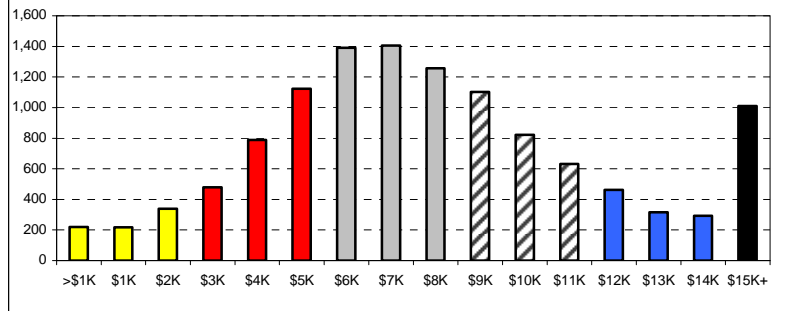
The 48,131 Milwaukee County workers in the UI benefit system included a number of difficult-to-serve populations (unduplicated counts):

- 7,232 were **ex-offenders** in the Department of Corrections system.
- 5,240 were or had been **W-2 clients**
- 2,097 other single parents who had received **Wisconsin Shares** child care subsidies
- 3,971 were other parents (with school-age children) on other public assistance (**FoodShare, BadgerCare Plus**).

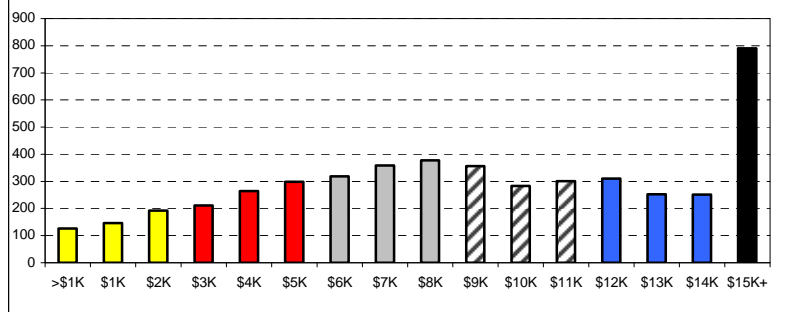
**Job Sites of Laid-Off Workers in Milwaukee County with Prior Quarterly Earnings of \$10,000 or More**



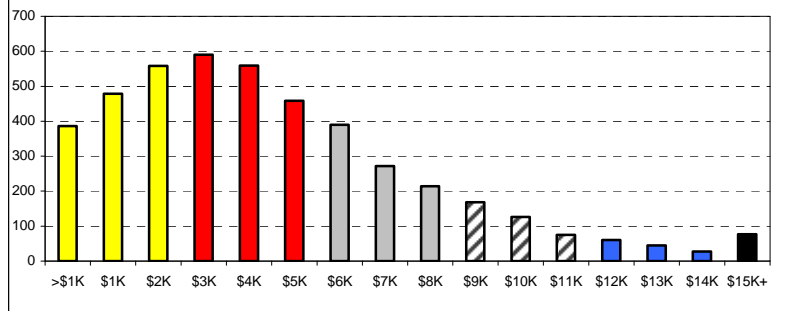
**Prior Quarterly Wages of Laid-Off Workers in Manufacturing**



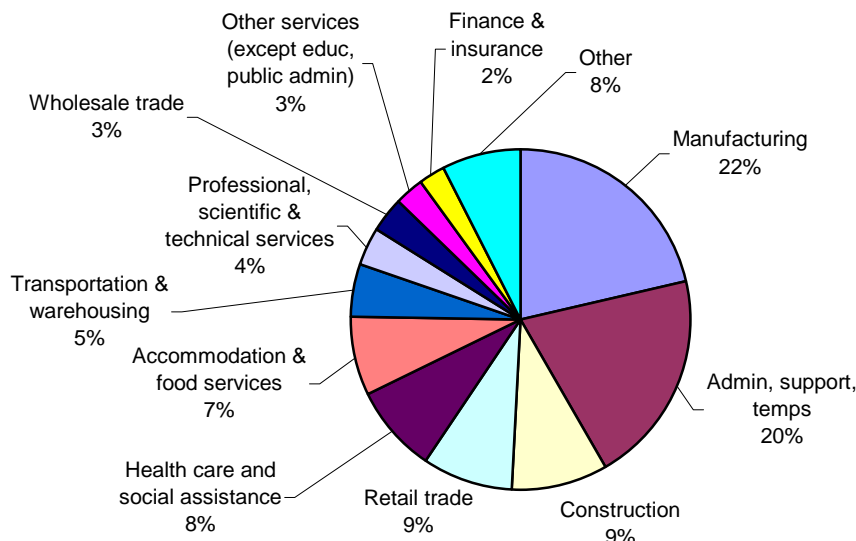
**Prior Quarterly Wages of Laid-Off Workers in Construction**



**Prior Quarterly Wages of Laid-Off Workers in Retail Trade**



**Industries of Laid-Off Milwaukee County Workers**



The largest number of workers losing their jobs in Milwaukee County worked in manufacturing. Other hard-hit industries included administrative support (including temp agencies), construction, retail trade, health and social services, and accommodations and food service.

Industries with fewer layoffs included utilities, governments, and educational services.

The full report is available at the University of Wisconsin-Milwaukee Employment & Training Institute website at [www.eti.uwm.edu](http://www.eti.uwm.edu). The research was funded by the Milwaukee Area Workforce Investment Board and the Fitch Research Fund of the Greater Milwaukee Foundation.

Milwaukee Drill photo courtesy of Milwaukee Electric Tool Corporation