

T H E U N I T ' S E D G E

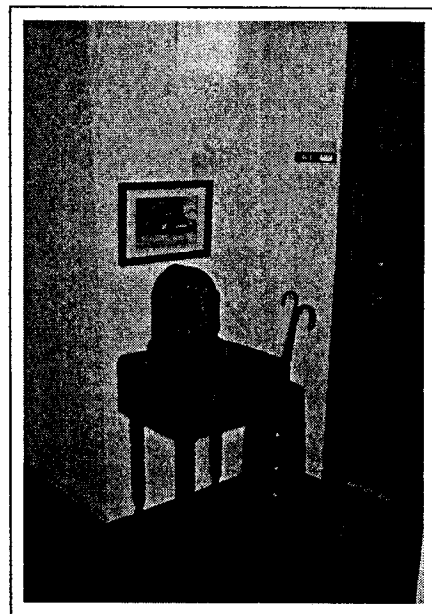
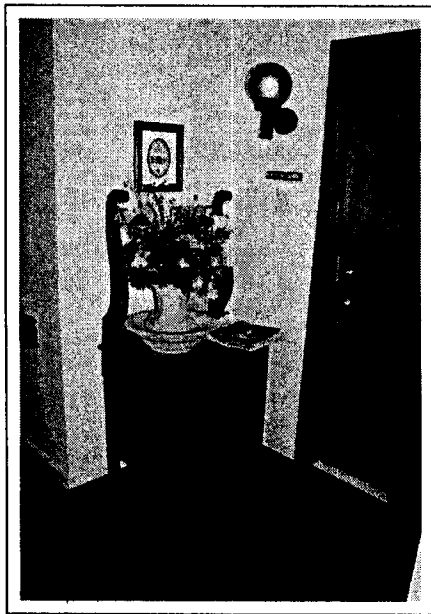
EXPLORING THE BOUNDARY

BETWEEN

PUBLIC AND PRIVATE DOMAINS

IN RESIDENTIAL SETTINGS

FOR OLDER PERSONS



Mark A. Proffitt, M.Arch
Sherylyn H. Briller, Ph.D

ABSTRACT

This monograph explores the architectural boundary between the private domain in residential settings for older persons. In two retirement communities that encouraged personalization of resident entryways, quantitative and qualitative research methods were employed to compare different dwellings' edge treatments. this exploratory study addressed three major areas: 1) How are these edges used? 2) What factors influence their use? and 3) To what extent did the use of these areas provide a means for resident self-expression and promote socialization with others? Key study findings result in a typology of edge uses and architectural design guidelines.

PUBLICATIONS IN ARCHITECTURE & URBAN PLANNING

Center for Architecture & Urban Planning Research
University of Wisconsin-Milwaukee
P.O.Box 413
Milwaukee, WI 53201-0413
Email: caupr@uwm.edu

Report: R02-4
ISBN: 1-886437-23-8

Copyright 2002. All rights reserved.

For more information or to order additional copies, please direct requests to the above address.

C O N T E N T S

List of Tables	2
List of Figures	3
About the Authors and Acknowledgements.....	5
Monograph Summary	7
Problem Statement and Literature Review	17
The Sites	25
Community One	27
Community Two	33
Methods.....	39
Analyses and Findings	45
Photographic Analyses	47
Apartment Survey	57
Apartment Survey Analytical Findings	71
Life Histories and Biosketches	77
Research Questions and Discussion	109
How are these edges being used?	111
What influences the use of these edges?	125
What messages are these edges conveying?.....	133
What is the edges' influence on perceptions of the setting?	136
What is the edges' influence on socialization?	138
Future Research	141
Design Guides	147
Bibliography	157
Appendix	163

L I S T O F T A B L E S

Table One – Community One Resident Demographics	27
Table Two – Community One Capacity	27
Table Three – Community Two Resident Demographics	33
Table Four – Community Two Capacity	33
Table Five – Photographic Data Quantified	41
Table Six – Interview Data Quantified	42
Table Seven – Survey Data Quantified	42
Table Eight – Relationship between Research Questions and Methods	43
Table Nine – Assisted Living Architectural Doorway Types	47
Table Ten – Apartment Architectural Doorway Types	47
Table Eleven – Total Number of Objects per Doorway by Care Level	48
Table Twelve – Total Number of Objects per Doorway by Community and Care Level	48
Table Thirteen – Mean Number of Objects per Doorway by Care Level and Architectural Features	48
Table Fourteen – Percentage of Type of Objects per Doorway by Care Level.....	50
Table Fifteen – Percentage of Objects per Doorway by Care Level and Architectural Features	51
Table Sixteen – Mean Number of Object Category Types Displayed per Unit Type and Architectural Style of Doorway	52
Table Seventeen – Significant Relationships between Objects and Placements for All Alcoves	53
Table Eighteen – Significant Relationships between Objects and Placements for Assisted Living Alcoves	54
Table Nineteen – Significant Relationships between Objects and Placements for Apartment Alcoves	55
Apartment Survey	
Question One	57
Question Two	59
Question Three	60
Question Four	61
Question Five	62
Question Six	63
Question Seven	65
Question Eight	66
Question Nine	68
Question Ten	68
Question Eleven	69
Question Twelve	69
Question Thirteen	70
Table Twenty – Statistically Significant Relationships for Both Communities	71
Table Twenty One – A Typology of Uses	111

LIST OF FIGURES

Figure One – Example of Using the Unit’s Edge	20
Figure Two – Captain Eldridge House	23
Figure Three – Annie Maxim House	23
Figure Four – Corrine Dolan Center	23
Figure Five – Woodside Place	23
Figure Six – Community One’s Site Plan	26
Figure Seven – Community One’s Assisted Living Setting	29
Figure Eight – Community One’s Assisted Living Alcove Types	29
Figure Nine – Community One’s Apartment Styles	31
Figure Ten – Community One’s Apartment Alcove Types	31
Figure Eleven – Community Two’s Site Plan	32
Figure Twelve – Community Two’s Assisted Living	35
Figure Thirteen – Community Two’s Assisted Living Alcoves Types	35
Figure Fourteen – Community Two’s Apartment Setting	37
Figure Fifteen – Community Two’s Apartment Alcove Types	37
Figure Sixteen – Scooter Parking Example	113
Figure Seventeen – Foyer Example	113
Figure Eighteen – Example of Displays Changing Over Time	116
Figure Nineteen – Example of Working a Display Around the Light Switch	127
Figure Twenty – Example of a Permanent Change to an Alcove	127
Figure Twenty One – Example of Using a Doorway like the Front Hall of a House	131

Note: All Biosketch Photographs accompany the interview text.

A B O U T T H E A U T H O R S

Mark Proffitt, M.Arch is an architectural researcher with Dorksy Hodgson + Partners, an architectural firm that specializes in designs for senior living. Mr. Proffitt received his Masters's degree in Architecture from the University of Wisconsin-Milwaukee, where he was a Fellow with the Institute on Aging and Environment. After receiving his degree, he served as a facilities architect and manager for a developer of retirement communities. He then served as a Project Associate for IDEAS, Inc., a national research and consultation firm where he focused on environments for people with dementia. Mr. Proffitt has significant experience in conducting post-occupancy evaluation research in senior living environments. He has published and given presentations to regional and national conferences on the subject of research to inform and validate design decisions. Mr. Proffitt is one of the authors of the four volume series "Creating Successful Dementia Care Settings" (Health Professions Press 2001).

Sherylyn Briller, Ph.D. is an Assistant Professor of Anthropology and Adjunct Faculty in the Institute of Gerontology at Wayne State University. She holds a Ph.D. in Anthropology and a Graduate Certificate in Gerontology from Case Western Reserve University. Dr. Briller is a medical anthropologist who specializes in the anthropology of aging and qualitative research methodologies. She worked for five years for IDEAS, Inc. as a Project Associate and Project Director on research relating to different models of dementia care and ways to create more supportive living environments. Dr. Briller has published, consulted and given presentations to numerous audiences including academics, policymakers, long term care staff and consumers on innovative long term care settings. Dr. Briller is one of the authors of the four volume series "Creating Successful Dementia Care Settings" (Health Professions Press 2001).

A C K N O W L E D G M E N T S

Over the course of this project, many people and organizations have contributed both time and financial resources. This project was primarily funded by The Center for Architecture and Urban Planning Research at the University of Wisconsin at Milwaukee. IDEAS, Inc. and DORSKY HODGSON + PARTNERS, Inc. provided time and resources, so that the project could be completed.

We want to thank the administrators, staff and the residents from both of the participating communities. They welcomed the research with open arms and a great deal was learned in the short time spent in both communities. Key staff members and residents provided invaluable assistance throughout the entire process.

Several people contributed their valuable time to craft the final product. Dr. Rebecca Meehan provided her excellent statistical analysis skills to provide additional credence for the results. We also want to thank our families for their support during the project. Finally, Mark Proffitt wants to thank his old neighbor, Alfred Reingold for his photography skills when he did the first pilot for this study four years ago. Through his lens, he first saw the opportunity.