

T H E S I T E S

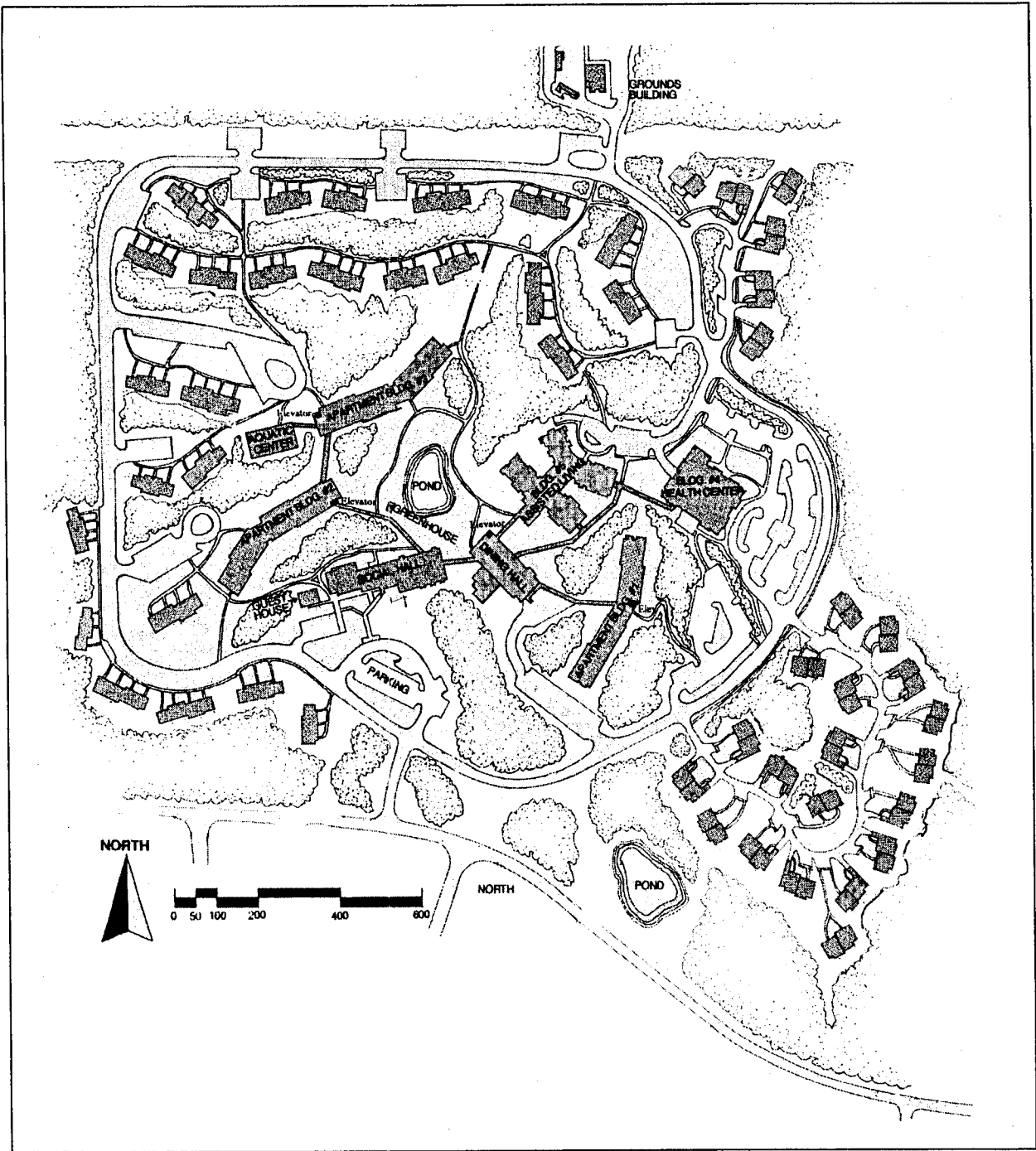


FIGURE SIX COMMUNITY ONE'S SITE PLAN

COMMUNITY ONE

TABLE ONE - COMMUNITY ONE RESIDENT DEMOGRAPHICS

Average Age	82.2 Years
Number of Residents	405
Affiliated with Local College	(no records)
Volunteer or Work in the Community	(no records)

RESIDENT DEMOGRAPHICS

DESCRIPTION

Built: 1979

Envi rons

Suburban Area of Academic College Town in the Southern United States.

Campus

A 120 acre park-like campus with mature pine trees and gently rolling hills. The apartment building, assisted living building, the health center, and the social hall are all connected by enclosed pedestrian walkways. The independent cottages have attached garages and are located in a suburban type

TABLE TWO - COMMUNITY ONE CAPACITY

Independent Living	280
• Apartment Style	146
• Cottage Style	134
Assisted Living	30
Nursing Care	60

SETTING AND ENTRANCEWAY DESCRIPTIONS

Assisted Living Setting

The assisted living building is a converted skilled nursing building that also serves as a primary pedestrian link between the new skilled nursing building and the social hall. The building plan is a modified "H" type with the primary common spaces being located along the central hub (See Figure Seven). Significant alterations were made to the original nursing building to create attractive large units in a variety of floor plans. All units have patios and kitchenettes.

Assisted Living Entranceways

There are three types of entranceways in the assisted living building (See Figure Eight). Twenty of the thirty entranceways do not have a recessed alcove. These are referred to as "hallway alcoves" in this study. Residents personalize the walls surrounding their entrance doors. Some of the residents who live at the ends of the hallways felt they had the space to place a small table at their doorway even if they did not have a recessed alcove. Ten of the entranceways have a deep recessed entrance with an out swinging entrance door. The out swinging door did limit the available space a resident could personalize. Eight of the recessed doors have a double configuration coupled with an adjoining door and two have a single alcove. Double entranceways do not have any defining vertical element separating the two doorways. None of the doorways in the assisted living building have a built in shelf.

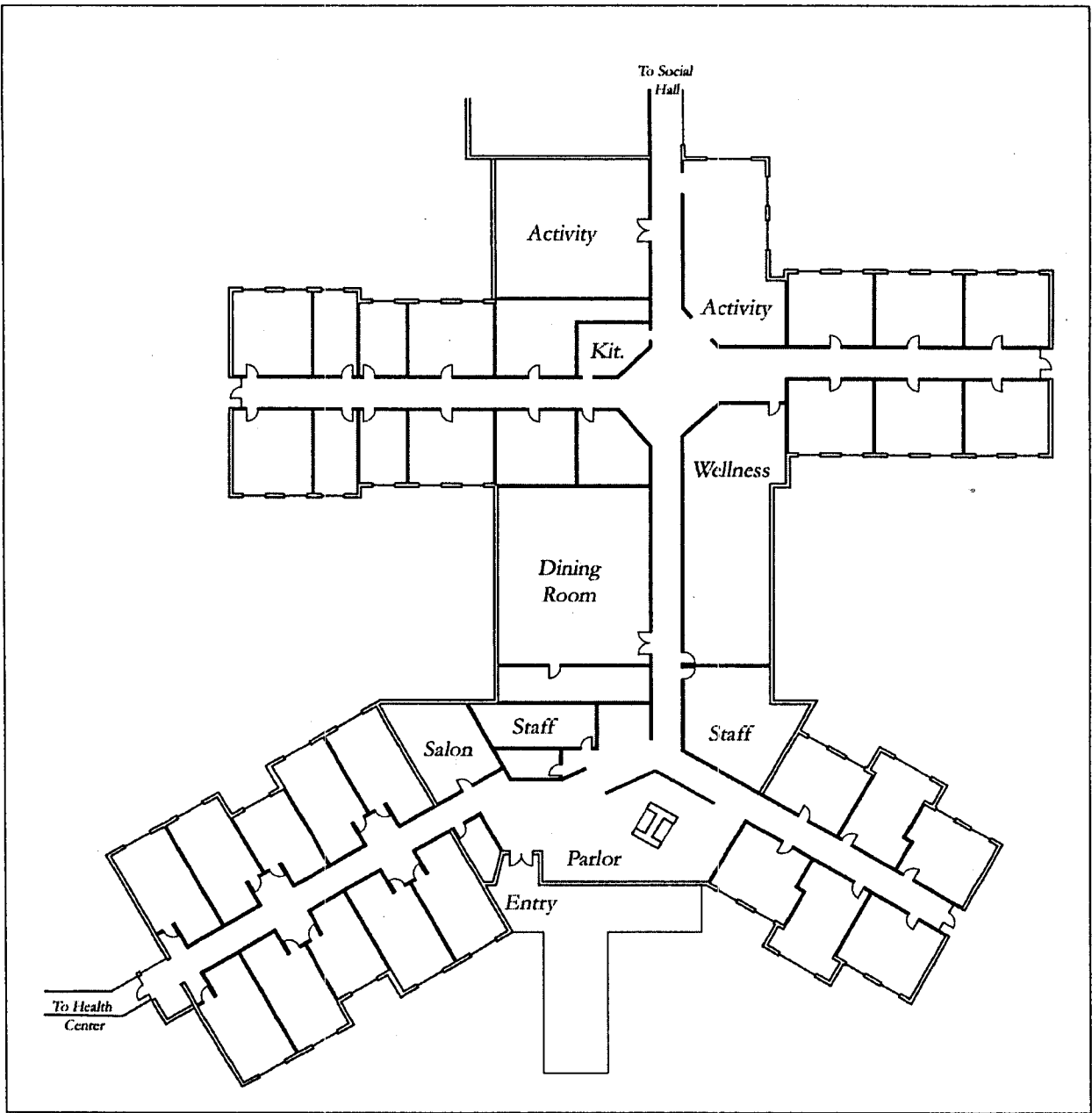


FIGURE SEVEN COMMUNITY ONE'S ASSISTED LIVING SETTING

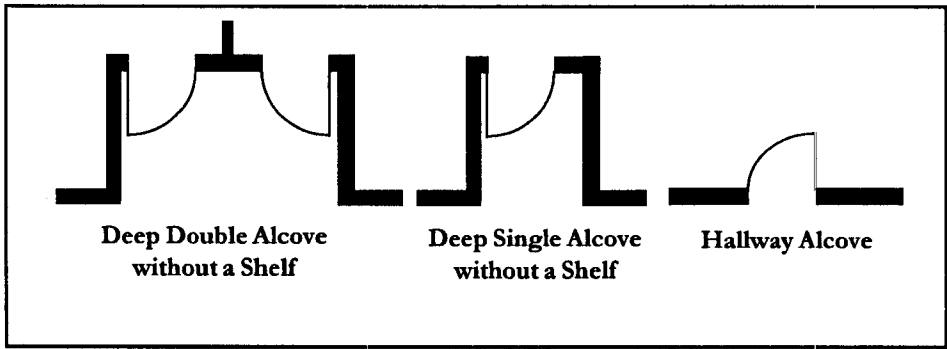


FIGURE EIGHT COMMUNITY ONE'S ASSISTED LIVING ALCOVE STYLES

Apartment Settings

There are a total of 146 apartments located in three buildings each connected to the central social hall by enclosed walkways. Within the community, there are 27 studios, 84 one bedroom units and 35 two bedrooms units (See Figure Nine). Each of these buildings is a two to three story structure with approximately twenty units per floor. The buildings have six foot wide corridors and a comfortably furnished communal living room on each floor.

Apartment Entranceways

Each apartment has an entrance alcove with a switched electric light and an outlet. There are two floor plans for the alcoves (See Figure Ten). The majority of the units have an alcove that is three feet by four and a half feet which is rectangular in shape. At major jogs in the hallway, the units have a larger entrance alcove. These larger alcoves have a 45 degree angled wall, which provides more floor space and more prominent walls for display. Floor plans indicate that these larger alcoves are provided for the studio apartments, which have 447 square feet of space compared to the 635 square feet for a one bedroom and 850 square feet for a two bedroom (See Figure Nine). None of the alcoves at the community has a built-in shelf. A small number of apartments have a tiny shelf that appears to be installed by the occupant after moving into the unit.

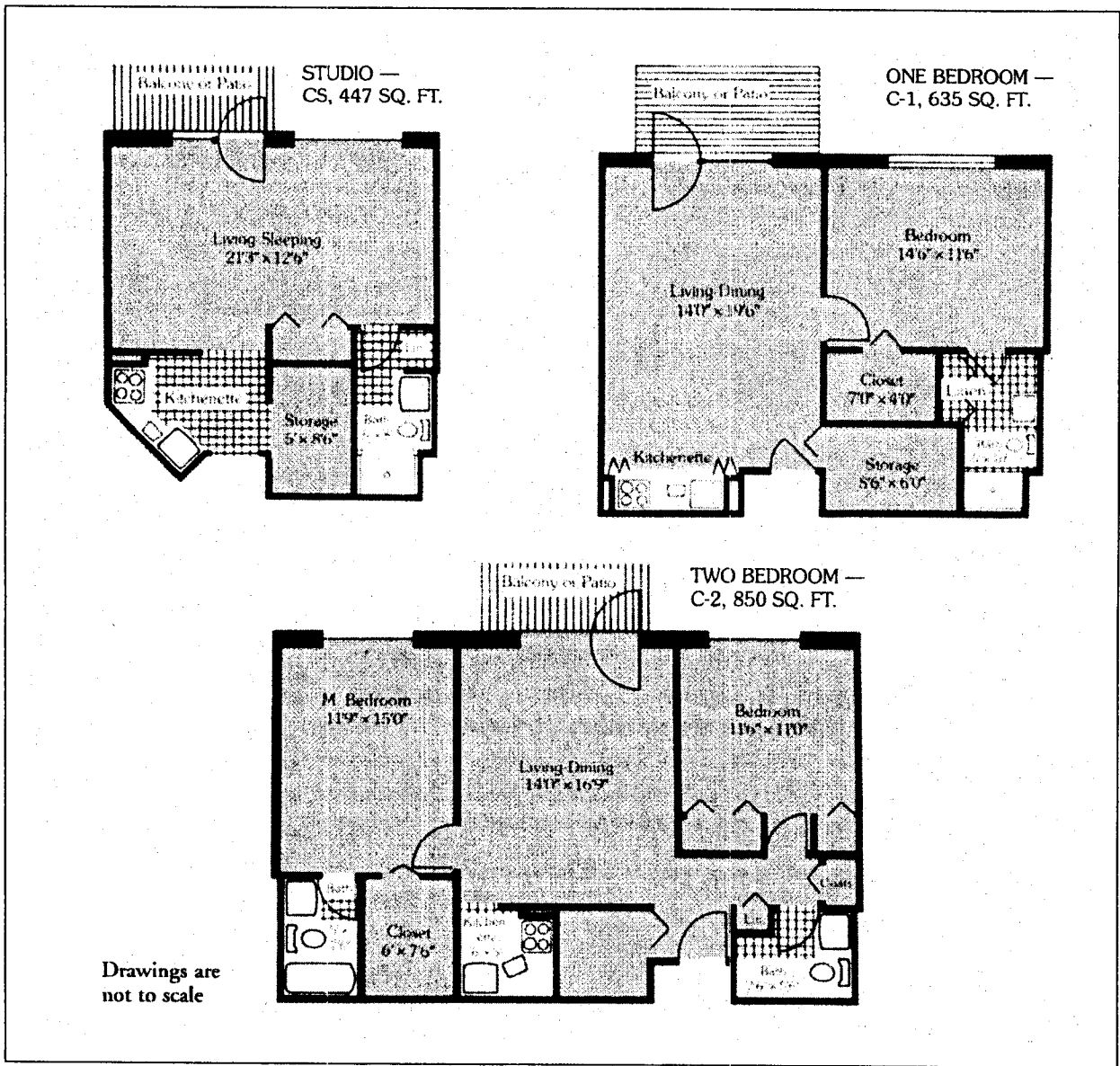


FIGURE NINE COMMUNITY ONE'S APARTMENT UNITS

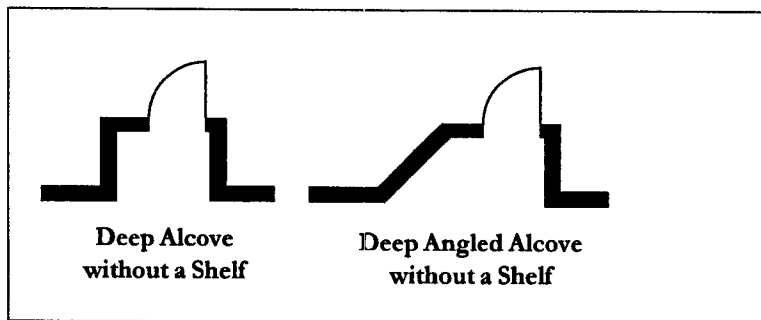


FIGURE TEN COMMUNITY ONE'S APARTMENT ALCOVE TYPES

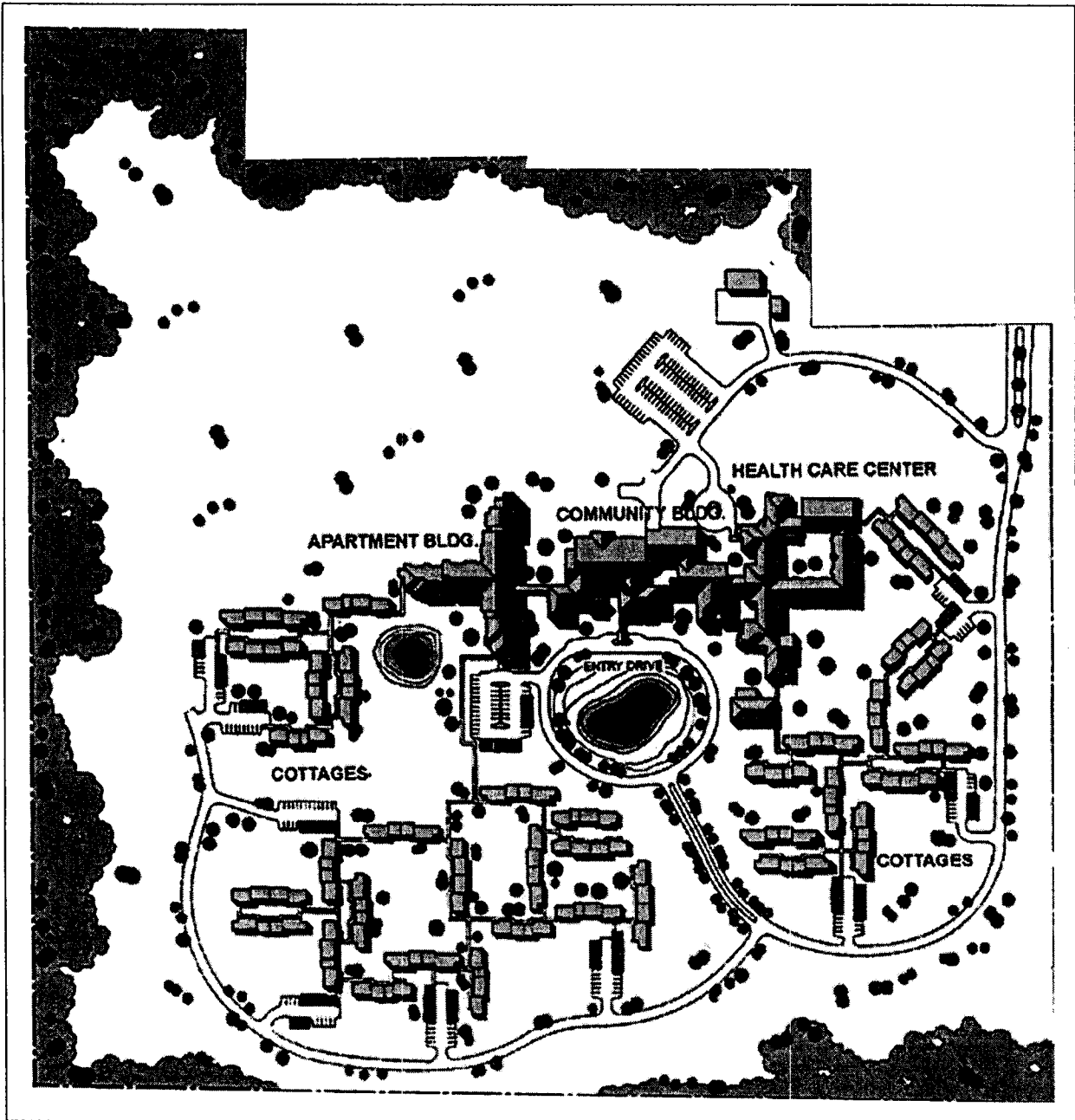


FIGURE ELEVEN COMMUNITY TWO'S SITE PLAN

COMMUNITY TWO

RESIDENT DEMOGRAPHICS

TABLE THREE - COMMUNITY TWO RESIDENT DEMOGRAPHICS

Average Age	75 Years
Number of Residents	256
Affiliated with Local College	42%
Volunteer or Work in Community	53%

DESCRIPTION

Built: 1993

Envi rons

Within an easy walk of the commercial downtown of a small college town in the Midwestern United States.

Campus

A campus setting located on flat farmland with a natural wetland. All buildings on the campus are interconnected by pedestrian walkways. Cars travel on a ring road, which connects small satellite parking areas. The apartment building, community building and health center are connected by enclosed walkways. Independent living cottages are connected by covered walkways. This community is accredited by the Continuing Care Accreditation Commission.

TABLE FOUR - COMMUNITY TWO CAPACITY

Independent Living	195
• Apartment Style	48
• Cottage Style	144
Assisted Living	24
Nursing Care	42

SETTING AND ENTRANCEWAYS DESCRIPTIONS

Assisted Living Setting

The studied assisted living setting is located in the retirement community's health center, which also contains the skilled nursing facility. The Quaker based philosophy encourages an integrated campus and the architecture supports this philosophy. The assisted living wing (See Figure Twelve) is an "L" shaped configuration with an enclosed great room located in the joint of the "L". One end of the assisted living wing connects to the central activity and dining area, which is shared with skilled nursing. Residents can choose to dine in any dining room they choose, but assistance is only given in the health center's dining room. The other end of the assisted living wing connects to the wellness center with an indoor pool and exercise room. In keeping with the organization's philosophy, the assisted living wing does not have a distinctive appearance to separate it from the skilled nursing portion of the building.

Assisted Living Entranceways

All doorways in the health center have an entrance alcove with a shelf (See Figure Thirteen). The assisted living entrance alcoves are either in a shared double or single configuration. Each of the alcoves is two and a half feet deep with a triangular shelf in the corner. The width of the double entranceway is twelve feet and the single entranceway is five feet. Double entranceways do not have any vertical element to visually separate the two doorways.

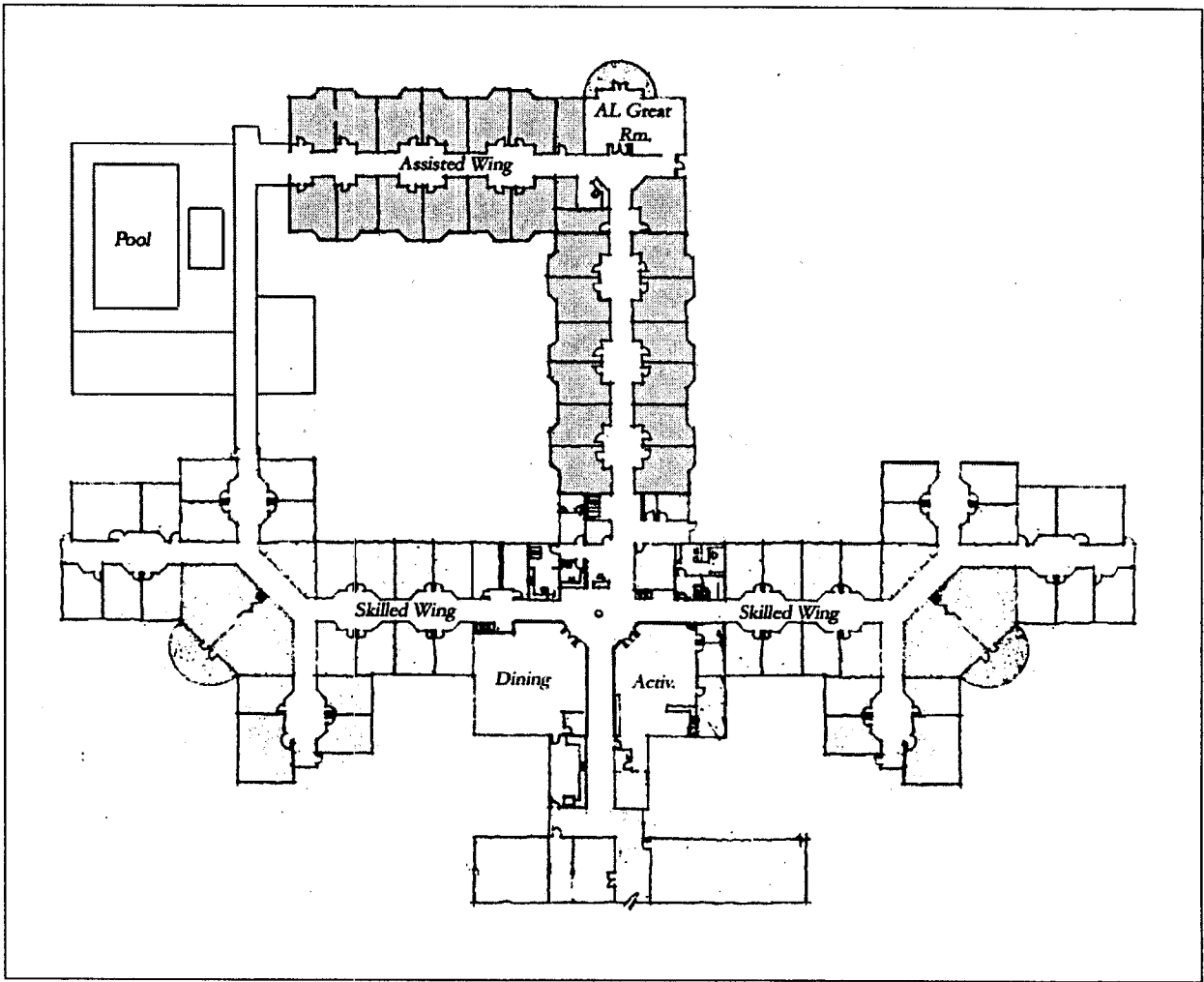


FIGURE TWELVE COMMUNITY TWO'S HEALTH CENTER PLAN WITH 'L' SHAPED ASSISTED LIVING WING

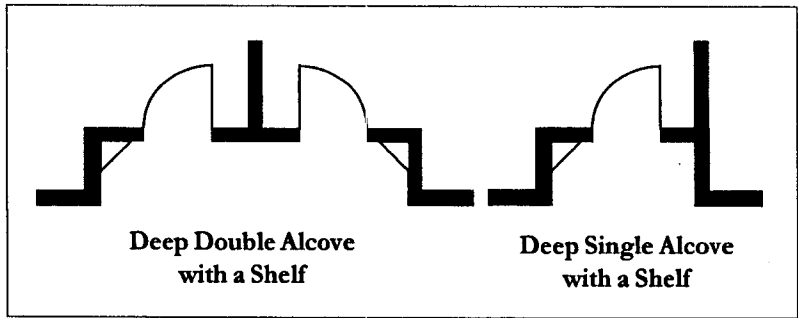


FIGURE THIRTEEN COMMUNITY TWO'S ASSISTED LIVING ALCOVES

Apartment Setting

The apartment building is the only two-story structure on the campus. The building has three wings radiating from a central link which connects to the community building (See Figure Fourteen). Two of the wings lead to covered walkways, which connect cottage residents to the main community building. Within the apartment building, there are four guest suites, four studio apartments, sixteen one-bedroom units and twenty-eight two-bedroom units. Each of the forty-eight apartments has an exterior balcony or a patio area.

Apartment Entranceways

There is one primary entranceway style for the majority of the apartments – a one foot recess with a triangular shelf on the door knob side of the door (See Figure Fifteen). Each door has a built-in light, which is not controlled by the residents. Motion detectors and a timer keep the lights on when needed. The four studio apartments' entranceways do not have a shelf or a recess. Residents who live near the enlarged seating areas in the apartment building or at the ends of the hall appear to take over some of these areas and use them as extensions of their living spaces.

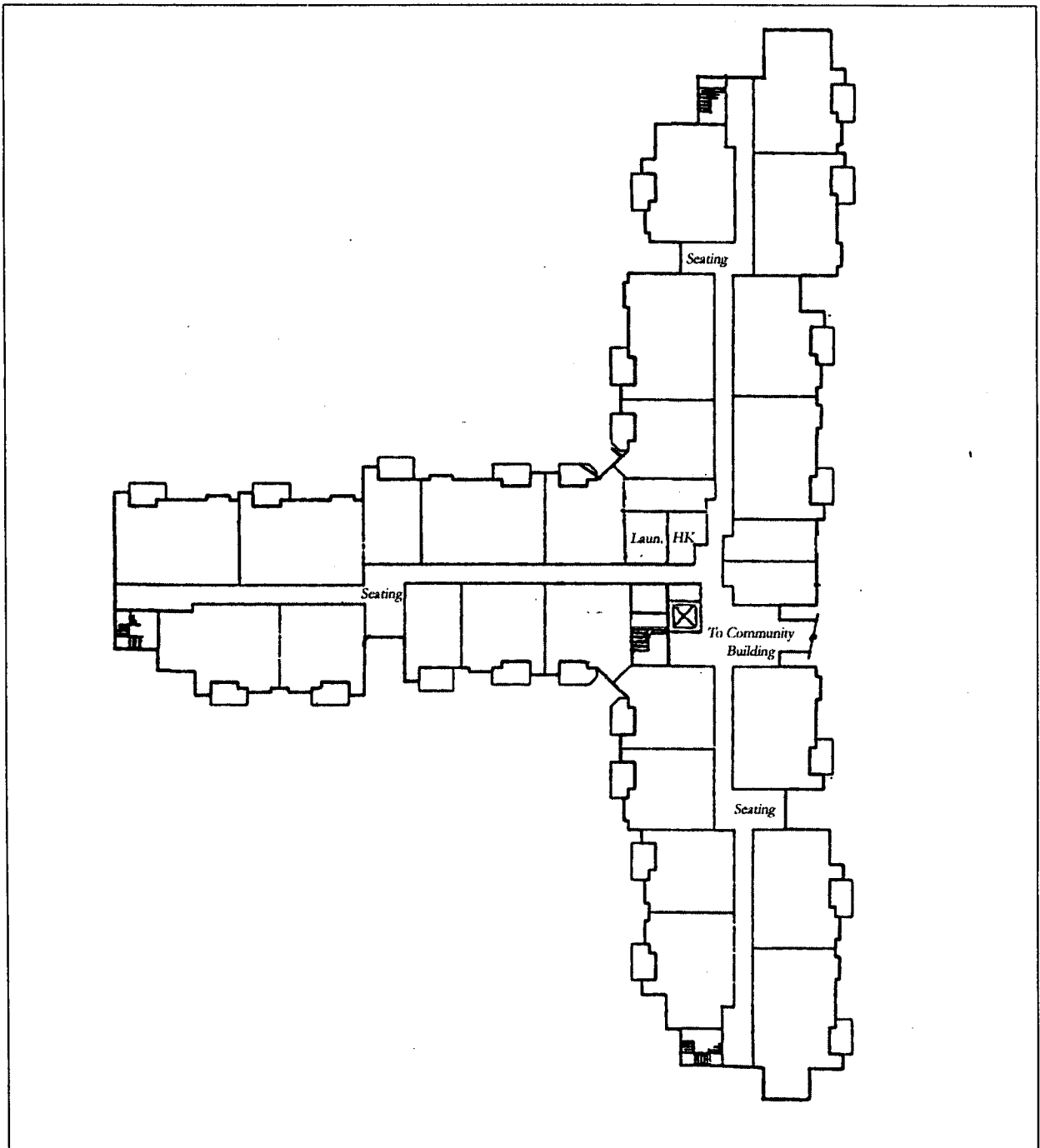


FIGURE FOURTEEN COMMUNITY TWO'S APARTMENT SETTING

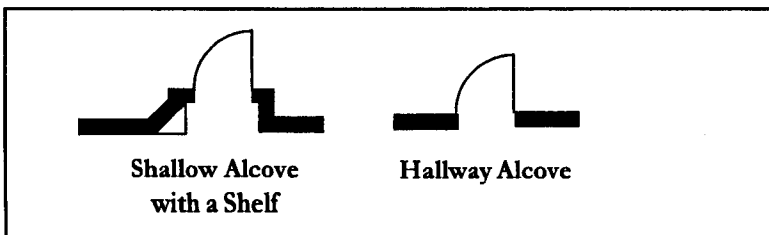


FIGURE FIFTEEN COMMUNITY TWO'S APARTMENT ALCOVE TYPES