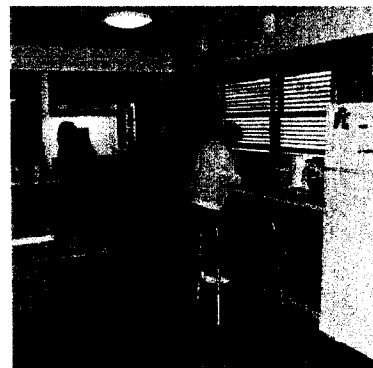


References



THERAPEUTIC KITCHENS IN DEMENTIA CARE SETTINGS

Berenbaum, R. L. J. (1994). Cooking as therapy with the confused elderly. Activities, Adaptation, and Aging, 19(1), pp. 54-60.

Bowlby, C. (1993). Therapeutic activities with persons disabled by Alzheimer's disease and related disorders. Gaithersburg, MD: Aspen Publishers, Inc.

Brawley, E. C. (1997). Designing for Alzheimer's disease: Strategies for creating better care environments. New York: John Wiley & Sons.

Calkins, M. P. (1988). Design for dementia: Planning environments for the elderly and the confused. Owings Mills, MD: National Health Publishing.

Cohen, U. and Day, K. (1993). Contemporary environments for people with dementia. Baltimore, MD: The Johns Hopkins University Press.

Cohen, U. and Weisman, G. D. (1991). Holding on to home: Designing environments for people with dementia. Baltimore, MD: The Johns Hopkins University Press.

Coons, D. H. (1991). Specialized Dementia Care Units. Baltimore, MD: The Johns Hopkins University Press.

Hellen, C. R. (1992). Alzheimer's disease: Activity-focused care. Boston, MA: Andover Medical Publishers.

Judd, S., Marshall, M, and Phippen, P. (1998). Design for dementia. London: Hawker Publications.

Mathew, L. J. and Sloane, P. D. (1991). Environmental Characteristics of existing dementia units. In P. D. Sloane and Mathew, L. J. (Eds.). Dementia units in long-term care. Baltimore, MD: The Johns Hopkins University Press.

Regnier, V. (1994). Assisted living housing for the elderly: Design innovations from the United States and Europe. New York: Van Nostrand Reinhold.

Ruga, W. (1997). Designing for the senses. In S. O. Marberry (Ed.). Healthcare Design. New York: John Wiley & Sons, Inc.

Valins, M. (1988). Housing for elderly people: A guide for architects and clients. London: the Architectural Press.

Zgola, J. M. (1987). Doing things: A guide to programing activities for persons with Alzheimer's disease and related disorders. Baltimore, MD: The Johns Hopkins University Press.